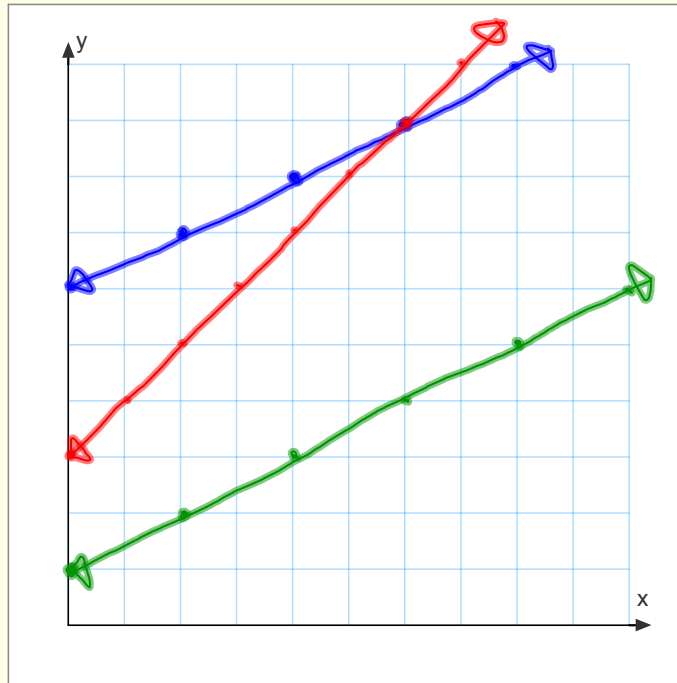


What do you see? Board Activity

Look at the graph below and write down anything that you see that is relevant to Systems of Linear Equations. Be prepared to share with the class.

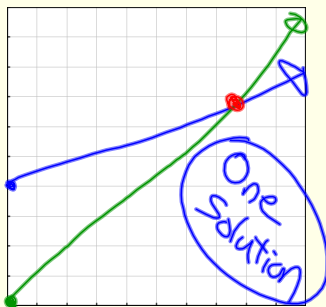


Race Activity

Volunteer Racers? Make a track and model each scenario. For each scenario, plot a graph of both racers. When will the racers be side by side?

Racer A: Head Start ———
Racer B: Faster ———

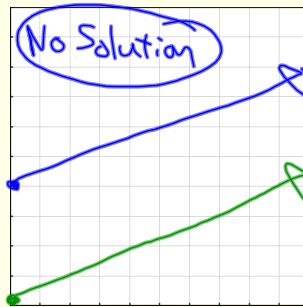
Intersecting Lines



$m \neq$
 b doesn't matter

Racer A: Head Start ———
Racer B: Same Speed ———

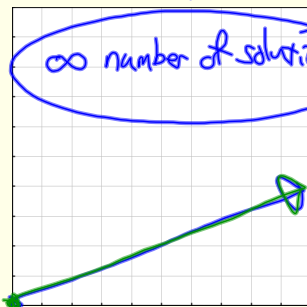
Parallel Lines



$m =$
 $b \neq$

Racer A: Same Start ———
Racer B: Same Speed ———

Coincident Lines



$m =$
 $b =$

Use the Distance Time Graphs Gizmo to further illustrate the Race Activity

Copy above as notes
& read pg. 178: Key Ideas