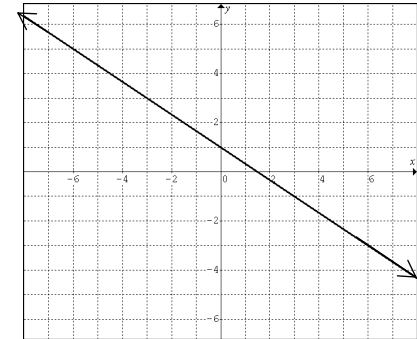


**LINEAR** function  
with a negative  
leading coefficient

$$y = -\frac{2}{3}x + 1$$

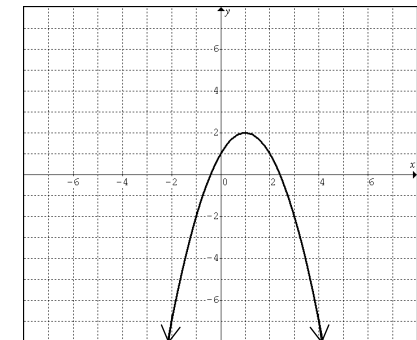
**End Behaviour:**  
Arms in opposite direction,  
extends up to the left,  
extends down to the right



**QUADRATIC** function  
with a negative  
leading coefficient

$$y = -x^2 + 2x + 1$$

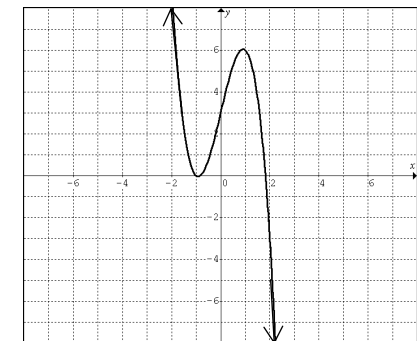
**End Behaviour:**  
Arms in same direction,  
both extend downward



**CUBIC** function  
with a negative  
leading coefficient

$$y = -2x^3 + 5x + 3$$

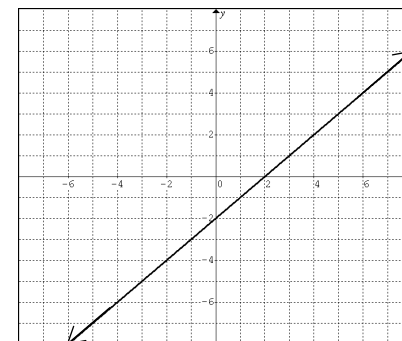
**End Behaviour:**  
Arms in opposite direction,  
extends up to the left,  
extends down to the right



**LINEAR** function  
with a positive  
leading coefficient

$$y = x - 2$$

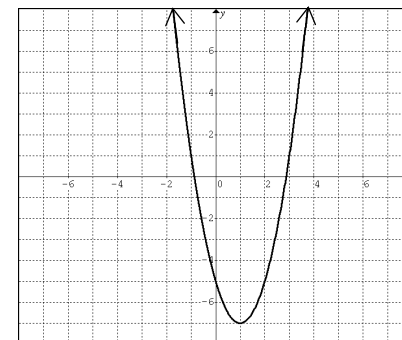
**End Behaviour:**  
Arms in opposite direction,  
extends down to the left,  
extends up to the right



**QUADRATIC** function  
with a positive  
leading coefficient

$$y = 2x^2 - 4x - 5$$

**End Behaviour:**  
Arms in same direction,  
both extend upward



**CUBIC** function  
with a positive  
leading coefficient

$$y = x^3 - 4x^2 + 2x - 3$$

**End Behaviour:**  
Arms in opposite direction,  
extends down to the left,  
extends up to the right

