



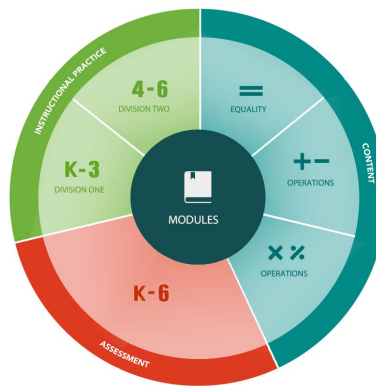
# Elementary Mathematics Professional Learning

*Alberta teachers are invited to participate in learning opportunities to enhance their confidence and fluency in the teaching of mathematics.*

## +Update

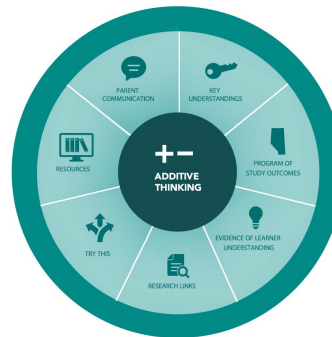
The series of provincial foundational webinars that began in November 2015 are archived and accessible on the ARPDC Learning Portal: <http://learning.arpdc.ab.ca>. There you will also discover learning guides offering a multitude of resources to accompany viewing and to support further reflection and learning opportunities. Click on the links below to access the archived webinars and the learning guides for each of the following modules :

- Insight into Equality
- Additive Thinking
- Multiplicative Thinking
- Assessment



The resources available within each learning guide are meant to support follow-up learning opportunities where teachers can continue the conversation and have opportunities for deeper and more personal reflection. Each learning guide includes resources in the following areas:

- Key Understandings
- Program of Study Outcomes
- Evidence of Learner Understanding
- Research Links
- Try This – Ideas to try with your students Resources
- Parent Communication



## +What's next

The next in the series of Provincial foundational webinars is:

**Instructional Practices in Mathematics : May 2nd 2016 @ 1pm and 4pm**

\*Check the ARPDC website for registration information: <https://arpdc.ab.ca>

Contact your regional Consortium to explore how your region can access further support. We offer learning opportunities designed to meet your needs in the teaching of elementary mathematics.

Check your Consortium website for information about EMPL opportunities planned in your region

